

Operator name and signature: CR _____

Output:	6324 lm
Peak:	2462 cd
Lux@50cm:	9848 Lux
Power:	41,3 W
Power Factor / DF	1,0
Standby power	0,45 W

Light efficacy:

153 Lumen/Watt

Light quality:

CRI: 83,2

Color temperature:

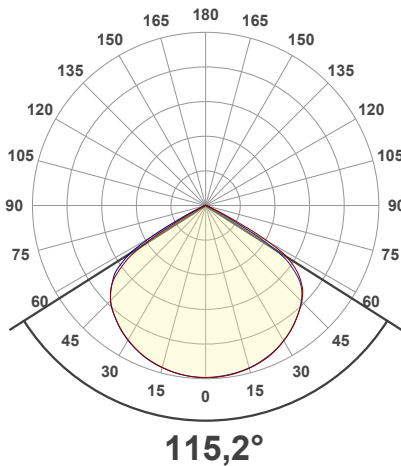
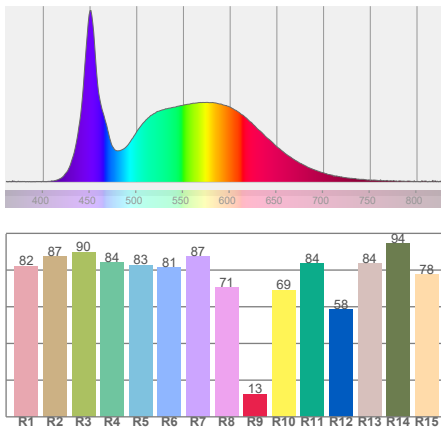
5620 K



According to regulation (EU) 2019/2015

Directionality:	Directional
Power (Pon)	35,49 W
Useful Lumen:	6375 lm
η_{TM} - Efficacy	211 lm/W
Energy Class:	A

Spectra



Product name:
NOVA 6 FOR LIFE - 100P

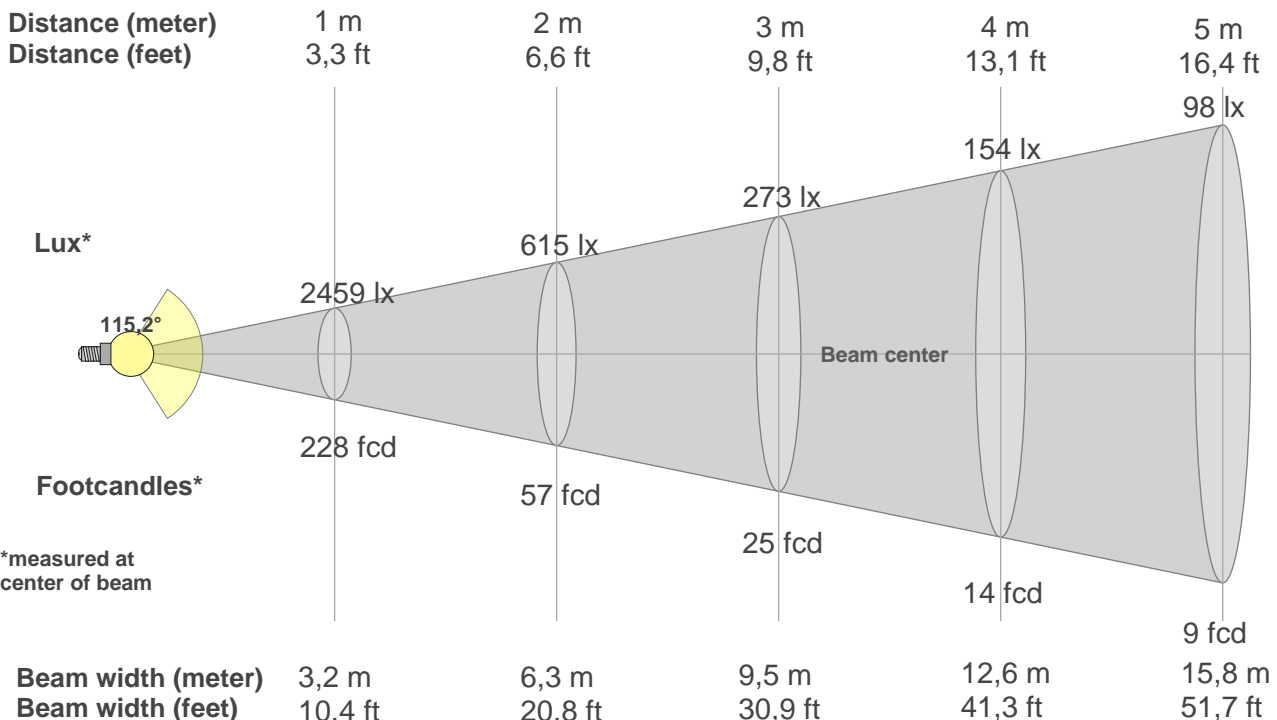
Item number:
03.6203

Date and time:
18-06-2024 12:51:26

Description:
Standby Power: 0,45 W
Sensor distance: 350 cm
Warm-up: <2% over 15 minutes
Power supply: 230 V AC
Pon[W]: 35,49
T2, 5700K #1, HW 2.0.0

BEAM DETAILS

Beam distance: 99,2 meters



*measured at center of beam

Beam intensities from 1-20m

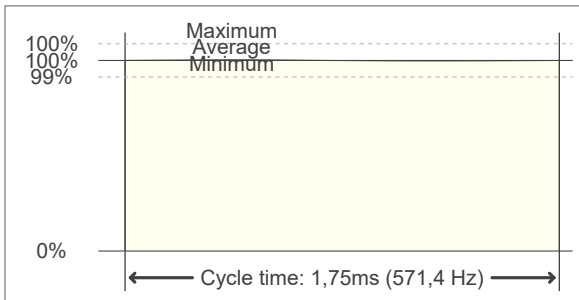
1m	2m	3m	4m	5m	6m	7m	8m	9m	10m	11m	12m	13m	14m	15m	16m	17m	18m	19m	20m
3,3ft	6,6ft	9,8ft	13,1ft	16,4ft	19,7ft	23ft	26,2ft	29,5ft	32,8ft	36,1ft	39,4ft	42,7ft	45,9ft	49,2ft	52,5ft	55,8ft	59,1ft	62,3ft	65,6ft
2459lx	615lx	273lx	154lx	98lx	68lx	50lx	38lx	30lx	25lx	20lx	17lx	15lx	13lx	11lx	10lx	9lx	8lx	7lx	6lx
228,5fc	57,1fcd	25,4fcd	14,3fcd	9,1fcd	6,3fcd	4,7fcd	3,6fcd	2,8fcd	2,3fcd	1,9fcd	1,6fcd	1,4fcd	1,2fcd	1fcd	0,9fcd	0,8fcd	0,7fcd	0,6fcd	0,6fcd

FLICKER DETAILS

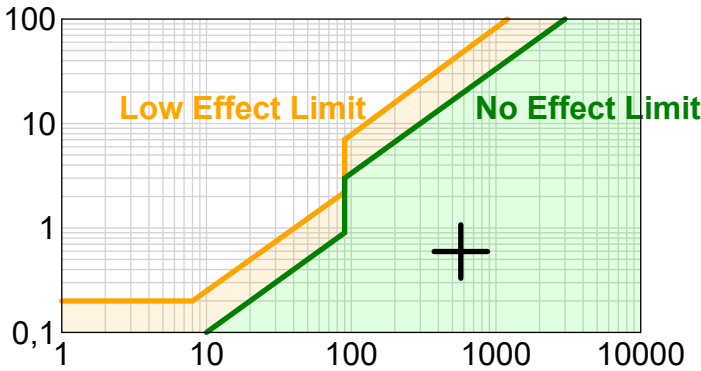
Flicker curve (complete sampled flicker signal)



Flicker frame (frame of one flicker period)

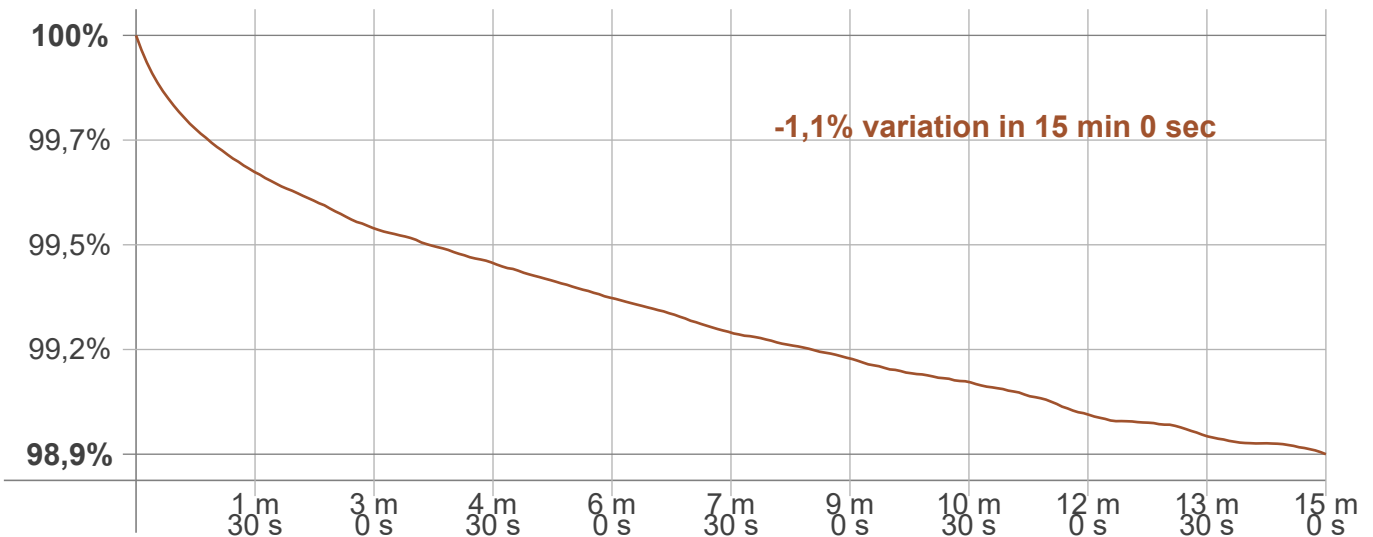


Flicker frequency:	571,43 Hz
Flicker index:	0
Flicker percentage:	0,6 %
SVM: (Visual flicker)	0,01
Pst LM:	0,15
SDCM	1,4
Rated Color Temperature	5700 K
Duv	0,0027
CIE Coordinates (x, y)	0,330, 0,340
CIE Coordinates (u, v)	0,206, 0,318



Flicker IEEE 1789

WARMUP DETAILS according to EN 13032-1



Percent of luminous flux output