

Operator name and signature: CR 

Output:	8142 lm
Peak:	3400 cd
Lux@50cm:	13601 Lux
Power:	91,9 W
Power Factor / DF	0,9
Standby power	0,28 W

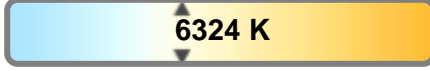
Light efficacy:



Light quality:



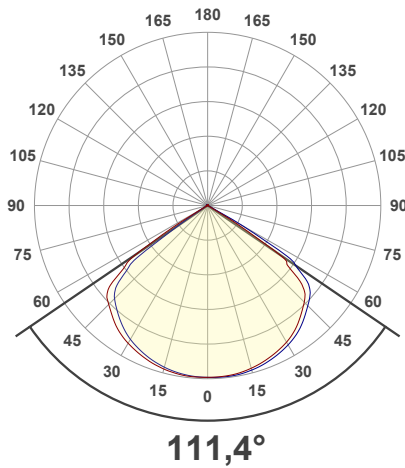
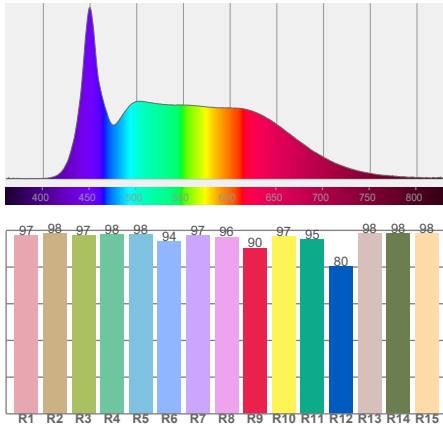
Color temperature:



According to regulation (EU) 2019/2015

Directionality:	Directional
Power (Pon)	77,71 W
Useful Lumen:	8514 lm
η _{TM} - Efficacy	129 lm/W
Energy Class:	E

Spectra



Product name:
Multimatch 8 Connect 100P 6500K

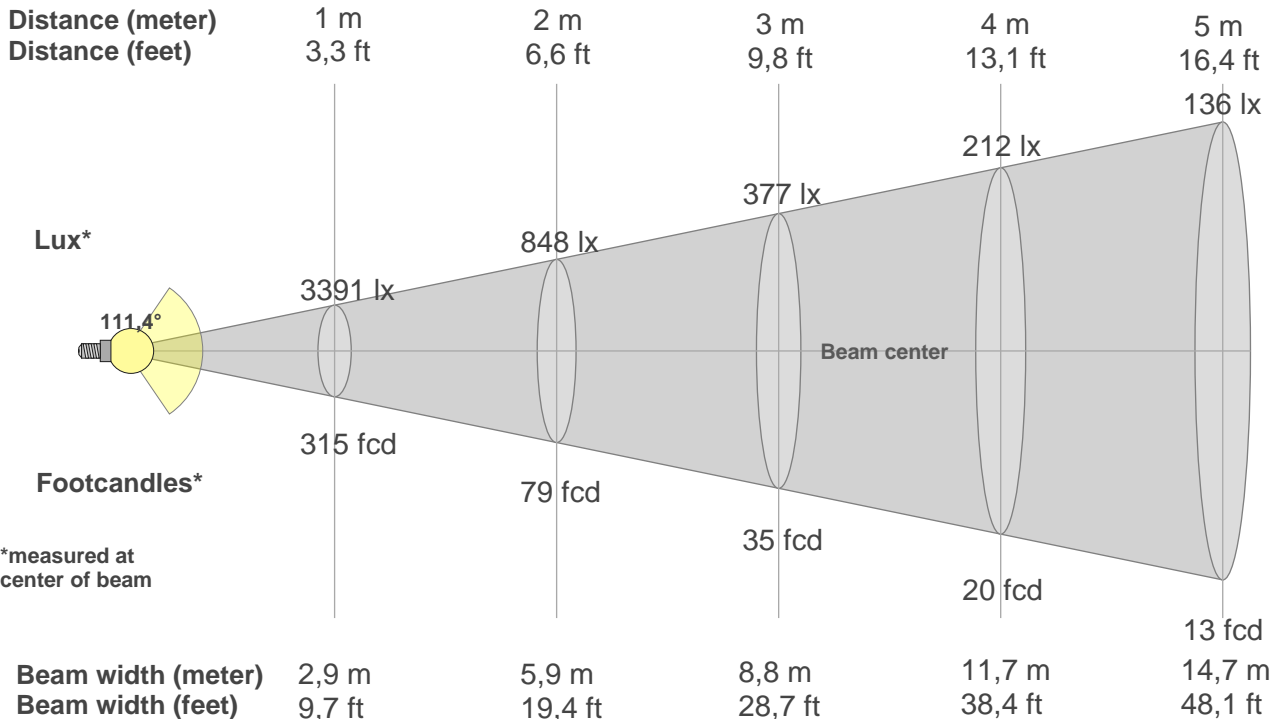
Item number:
03.5676C

Date and time:
04-11-2024 09:56:47

Description:
Standby Power: 0,28 W
Sensor distance: 350 cm,
baffle@300 cm
Warmup: <2% in 15 minutes
Power supply: 18 CONNECT PSU
Pon[W]: 77,71

BEAM DETAILS

Beam distance: 116,5 meters



Beam intensities from 1-20m

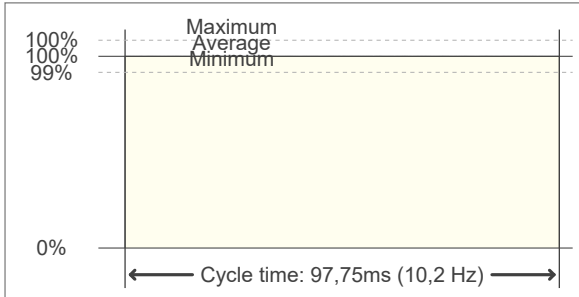
1m	2m	3m	4m	5m	6m	7m	8m	9m	10m	11m	12m	13m	14m	15m	16m	17m	18m	19m	20m
3,3ft	6,6ft	9,8ft	13,1ft	16,4ft	19,7ft	23ft	26,2ft	29,5ft	32,8ft	36,1ft	39,4ft	42,7ft	45,9ft	49,2ft	52,5ft	55,8ft	59,1ft	62,3ft	65,6ft
3391lx	848lx	377lx	212lx	136lx	94lx	69lx	53lx	42lx	34lx	28lx	24lx	20lx	17lx	15lx	13lx	12lx	10lx	9lx	8lx
315,1fcd	78,8fcd	35fcd	19,7fcd	12,6fcd	8,8fcd	6,4fcd	4,9fcd	3,9fcd	3,2fcd	2,6fcd	2,2fcd	1,9fcd	1,6fcd	1,4fcd	1,2fcd	1,1fcd	1fcd	0,9fcd	0,8fcd

FLICKER DETAILS

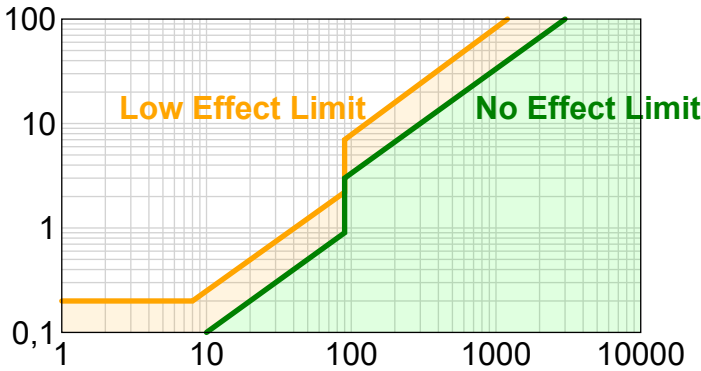
Flicker curve (complete sampled flicker signal)



Flicker frame (frame of one flicker period)

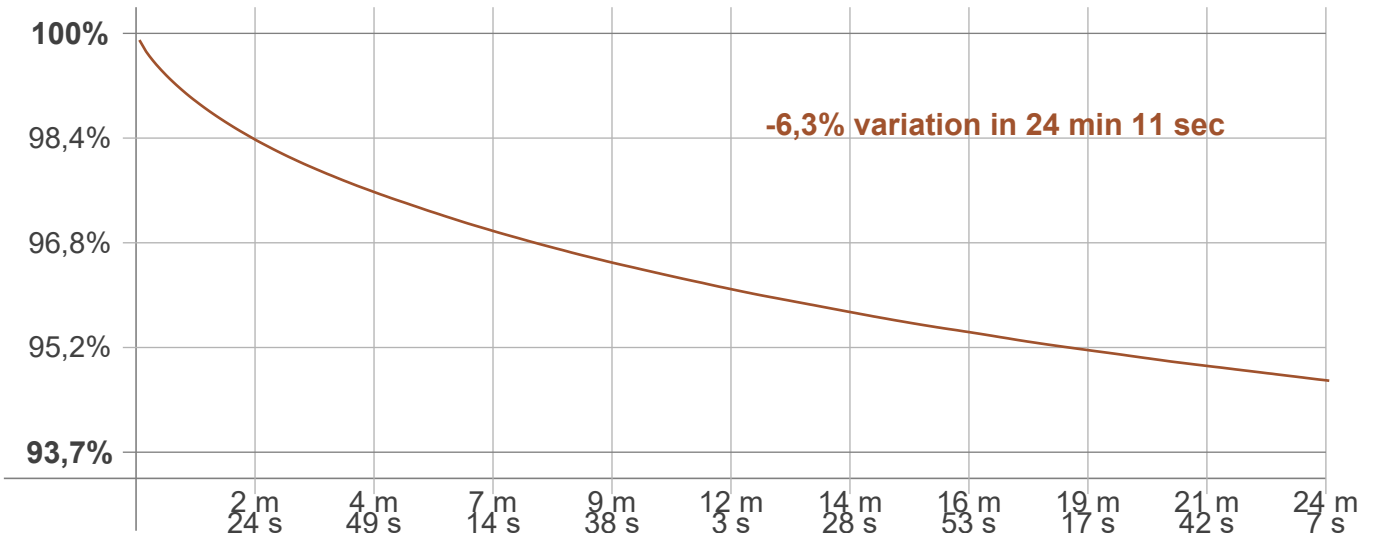


Flicker frequency:	10,23 Hz
Flicker index:	0
Flicker percentage:	0,04 %
SVM: (Visual flicker)	0
Pst LM:	0,01
SDCM	n/a
Rated Color Temperature	6324 K
Duv	-0,0052
CIE Coordinates (x, y)	0,317, 0,323
CIE Coordinates (u, v)	0,203, 0,311



Flicker IEEE 1789

WARMUP DETAILS according to EN 13032-1



Percent of luminous flux output