

# Battery Replacement Guide

This guide covers the replacement of the internal battery for the following products:

- 03.5610 – SLIM MINI
- 03.5612 - SLIM

## Step 1

Remove the screws from the cover.



## Step 2

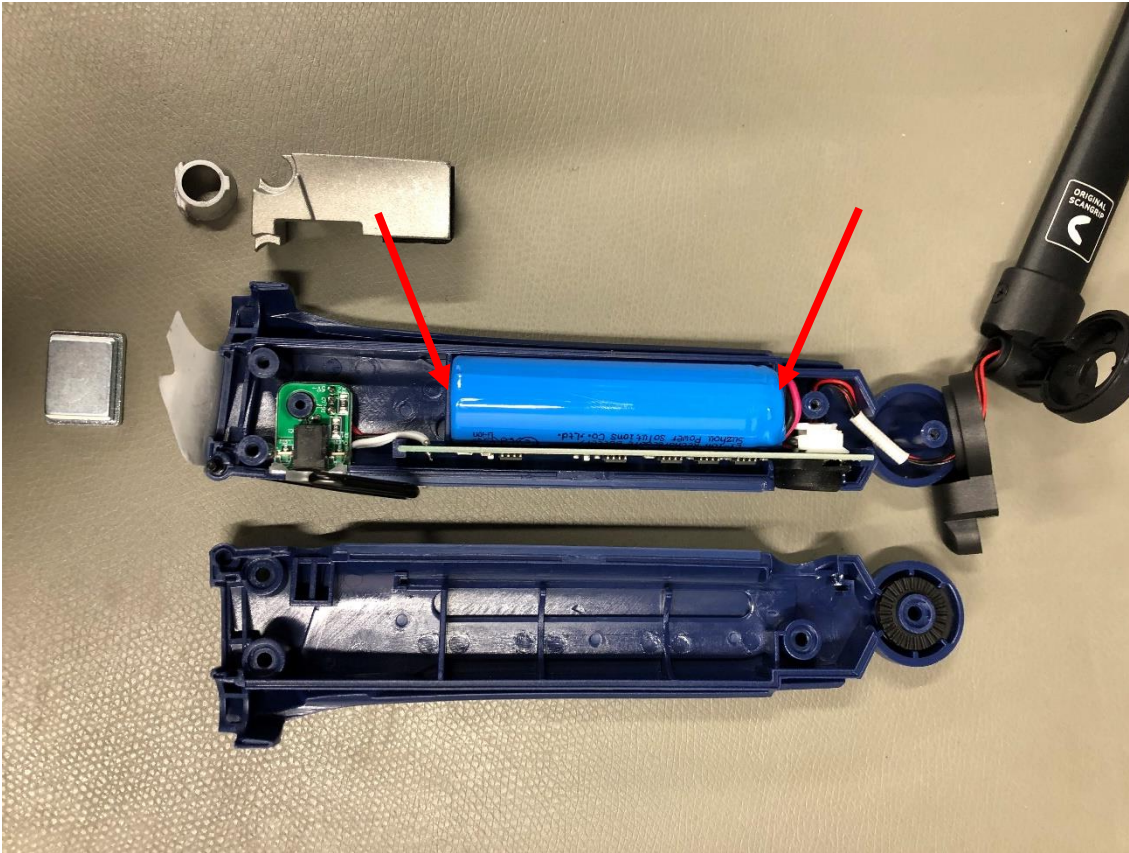
Remove the cover. To do this it is necessary to remove the sticker in the bottom of the lamp where the magnet is located (green arrow)

Also remove the magnet, weight, and spot ring (blue arrows).



### Step 3

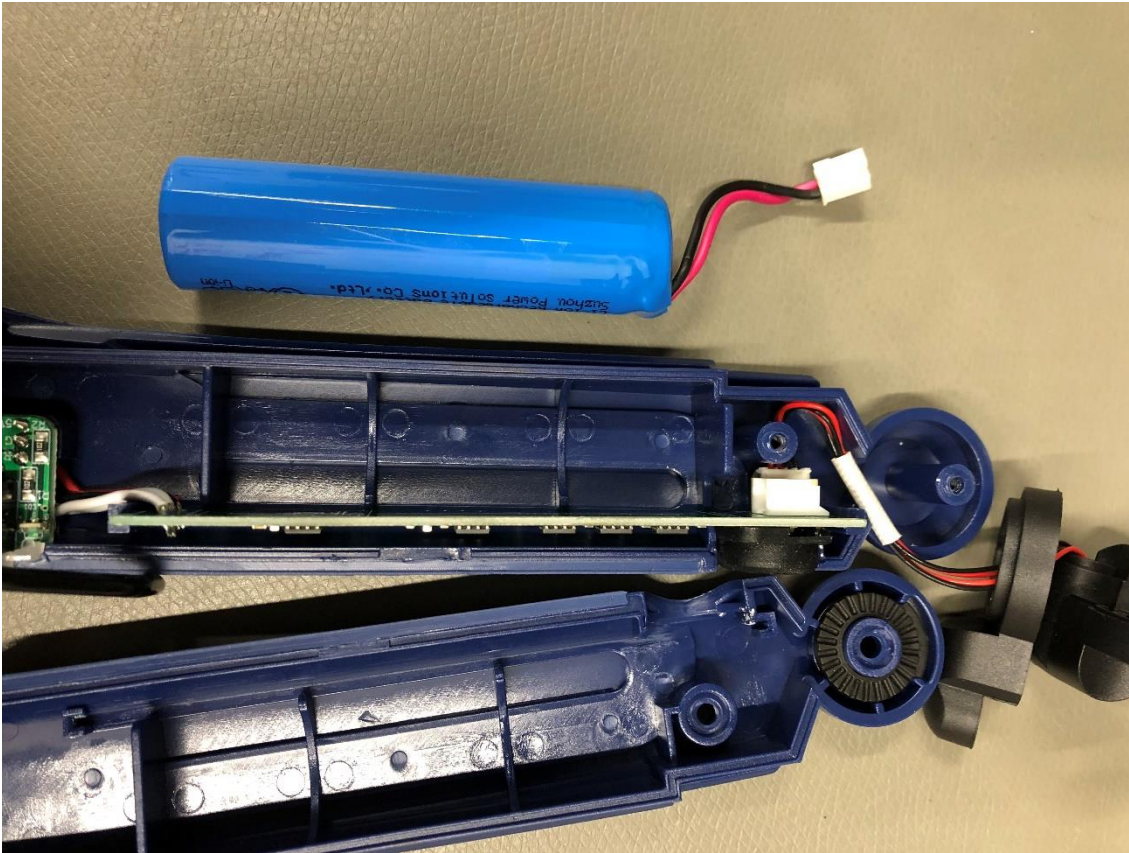
Remove the battery by using thumb and index finger at marked locations.





## Step 4

Unplug the battery. A small flat screwdriver is helpful for pressing the retaining pin on the connector.



## Step 5

Plug in the new battery and mount it in the cover.

Note: the battery wire must be on the correct side of the battery wall (green arrow).



## Step 6

Place the weight, magnet, and spot ring in the cover.

Note: make sure to place the spot ring correctly





## Step 7

Mount the cover back on the lamp.

